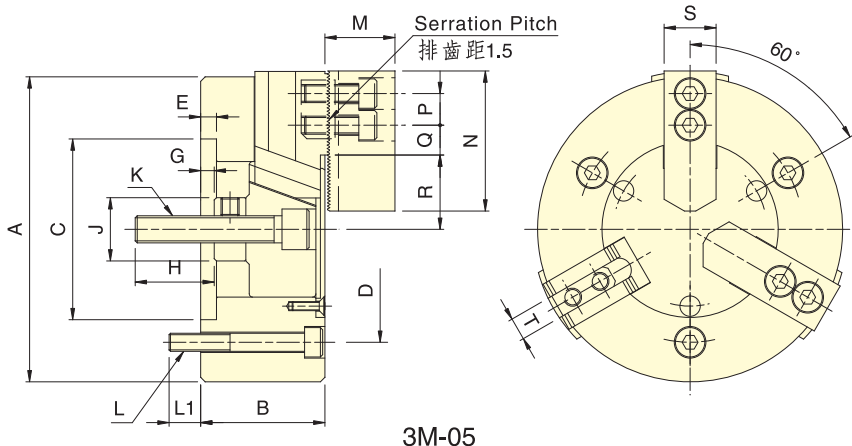
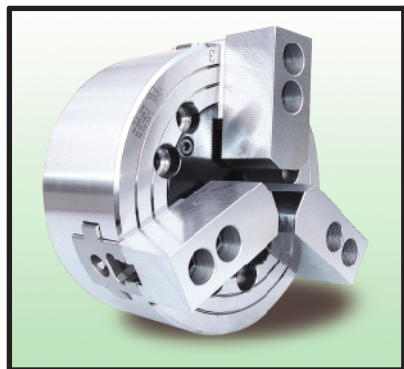


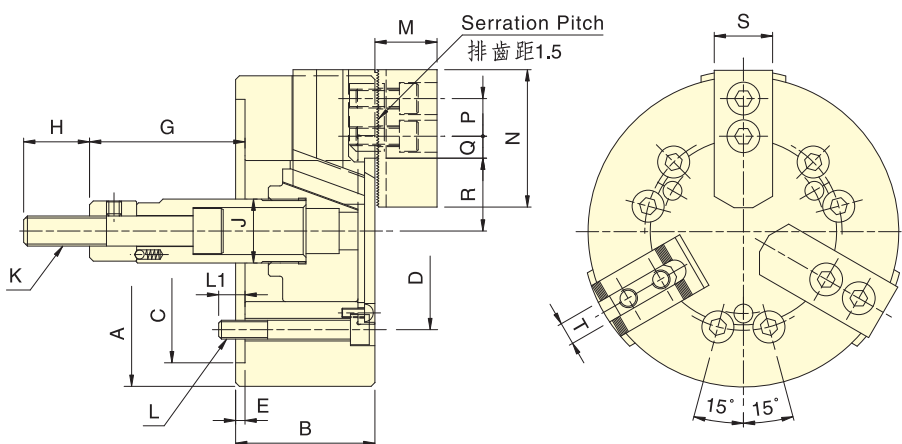
中實長爪行程夾頭

LONG JAW STROKE POWER CHUCK

POWER CHUCK



3M-05



3M-06~3M-12

保留規格修改的權利
Subject to technical changes.

規格 Spec. 型號 Model	根心行程 mm Plunger stroke	爪行程(直徑) mm Jaw stroke(Dia.)	夾持直徑 Chucking Dia. mm 最大 Max. 最小 Min.		容許油壓缸推力 kN(kgf) Max. D.B. pull	最大夾持力 kN(kgf) Max. clamping force	最高迴轉數 min ⁻¹ (r.p.m) Max. speed	I kg·m ²	重量 kg Weight	適用迴轉缸 Matching cyl.	最大使用壓力 Max. pressure Mpa (kgf/cm ²)
3M-05	15	10.9	135	14	9.8 (1000)	16.4 (1670)	4500	0.02	6.0	RK-75(N)	2.7(27)
3M-06	20	14.5	165		21.6 (2200)	36 (3680)	4000	0.04	12.2	RK-100(N)	3.0(30)
3M-08	23	16.7	210	17	29.4 (3000)	54.9 (5600)	3500	0.13	23.0	RK-125(N)	2.9(29)
3M-10	27	19.6	254	22	39.2 (4000)	74 (7550)	3000	0.30	34.3	RK-150(N)	2.8(28)
3M-12	30	21.8	304	26	54 (5500)	99 (10100)	2500	0.71	59.4		3.6(36)

寸法 Size 型號 Model	A	B	C (H6)	D	E	G max.	G min.	H	J
3M-05	135	55	80	100	7	6	-9	35	28
3M-06	165	74	140	104.8	5	101.5	81.5	36	34
3M-08	210	85	170	133.4		129	106		38
3M-10	254	89	220	171.4	6	160	133	46	45
3M-12	304	106				70	40		50

寸法 Size 型號 Model	K	L	L1	M	N	P	Q max.	Q min.	R max.	R min.	S	T
3M-05	M12x1.75	3~M8	14	31	62	14	17.0	5.5	32.9	27.45	25	10
3M-06	M16x2	6~M10		37	73	20	17.6	7.0	38.7	31.4	31	12
3M-08	M20x2.5	6~M12	20	38	95	25	22.8	8.8	47.5	39.1	35	14
3M-10		6~M16	18	43	110	30	33.0	12.8	53.9	44.1	40	16
3M-12				M24x3	51	130	30	47.8	13.3	62.5	51.6	50