



Rotary Power Chuck

- ▲ Air/Hydro cylinder is built-in. No need for extra cylinders.
- ▲ Repeatability for jaw type power chuck: 0.040mm-0.080mm.
- ▲ Repeatability for collet type power chuck: 0.030mm-0.050mm.
- ▲ Aluminum alloy chuck body, light-weighted, good heat dispensation.
- ▲ Allows non-stop operation when loading parts.
- ▲ Widely applied to convert manual lathe into powered ones.
- ▲ Widely applied to build special purpose machines.
- ▲ Do not spray cutting fluid to the chuck directly.
- ▲ Trans JA7-44/JH7-44 from O.D. chucking to I.D. expanding easily by installaing a I.D. Expanding Kit.

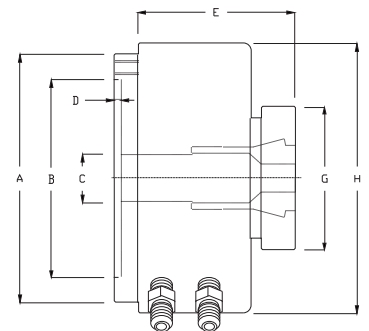
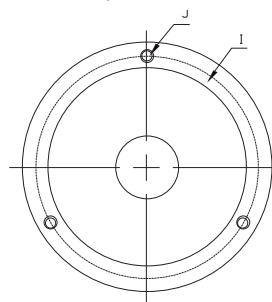


Introduction

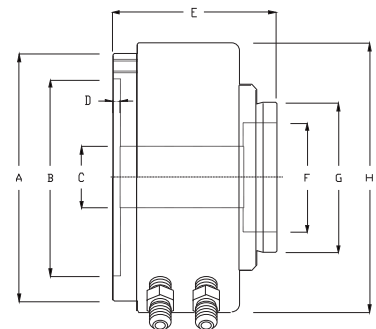
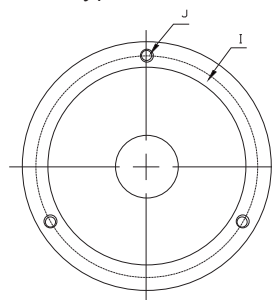
It used to be complex for users to convert a manual chuck system to a power one, since setting up a hydraulic system not only is expensive, but also is troublesome. JATO Rotary Power Chuck is specially designed to help users to set up a power workholding system in a low cost way. With a built-in rotary cylinder, JATO's Rotary Power Chuck allows users to easily and quickly set up a power workholding system, and saving cost on purchasing an additional rotary cylinder. JATO Rotary Power Chuck also has quick-change jaw/collet design, helping you to cope with parts of various dimensions.

Rotary Power Chuck comes with both air collet chuck and hydraulic collet chuck models that range from small sizes to large ones, giving users more options to choose from. Rotary Power Chuck now is widely applied to convert manual lathe to semi-auto ones with power workholding system, or is applied to build all kinds of special purpose machines.

Collet Type Chuck



JAW Type Chuck



Rotary Power Chuck

Collet Type Power Chuck *O.D. Chuck & I.D. Expanding

Model	JA7-44 / JA7-44C	JH7-44 / JH7-44C
A	192 (7.56")	192 (7.56")
B	155 (6.10")	155 (6.10")
C	44 (1.73")	44 (1.73")
D	5 (0.20")	5 (0.20")
E	135 (5.31")	135 (5.31")
F	-	-
G	110 (4.33")	110 (4.33")
H	212 (8.35")	212 (8.35")
I (P.C.D)	172 (6.77")	172 (6.77")
J	3H-M10xP1.5	3H-M10xP1.5
Collet/Jaw	C-44 Collet C-44I Expanding Kit	C-44 Collet C-44I Expanding Kit
Air/Hydro	Air	Hydro
Operating Pressure	2-20kg/cm ² (28-286psi)	2-20kg/cm ² (28-286psi)
Max. RPM	JA7-44: 1600 JA7-44C: 2200	JH7-44: 1600 JH7-44C: 2200
Capacity	44mm (1.73")	44mm (1.73")
Piston Area	116cm ² (18in ²)	116cm ² (18in ²)
Clamp Force	5400kgf@16kg/cm ² (12020lbf@229psi)	10800kgf@16kg/cm ² (24040lbf@229psi)
Weight	17kgs (37.4lbs)	17kgs (37.4lbs)

Jaw Type Power Chuck - Pneumatic

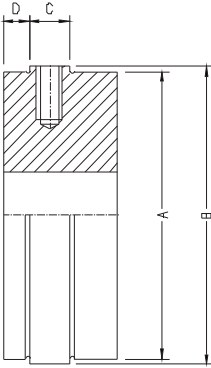
JA5-25	JA7-40	JA7-70
135 (5.31")	192 (7.56")	192 (7.56")
100 (3.94")	155 (6.10")	155 (6.10")
27 (1.06")	47 (1.85")	68 (2.68")
4 (0.16")	5 (0.20")	5 (0.20")
105 (4.13")	128 (5.04")	142 (5.60")
45 (1.77")	65 (2.56")	105 (4.13")
68 (2.68")	94 (3.70")	168 (6.61")
170 (6.69")	212 (8.35")	266 (10.47")
115 (4.53")	172 (6.77")	172 (6.77")
3H-M8xP1.25	3H-M10xP1.5	3H-M10xP1.5
C-25 Jaw	C-40 Jaw	C-70 Jaw
Air	Air	Air
2-9kg/cm ² (28-130psi)	2-9kg/cm ² (28-130psi)	2-9kg/cm ² (28-130psi)
1800	1600	1400
25mm/32mm (0.98"/1.26")	45mm/50mm (1.77"/1.97")	68mm/90mm (2.68"/3.54")
115cm ² (17.8in ²)	182cm ² (28.2in ²)	328cm ² (50.8in ²)
2254kgf@7kg/cm ² (4958lbf@100psi)	3567kgf@7kg/cm ² (7847lbf@100psi)	6429kgf@7kg/cm ² (14143lbf@100psi)
7.5kgs (16.5lbs)	15.0kgs (33.0lbs)	22.5kgs (49.5lbs)

Jaw Type Power Chuck - Hydraulic

Model	JH5-25	JH7-40	JH7-70	JH9-90	JH9-120
A	135 (5.31")	192 (7.56")	192 (7.56")	230 (9.06")	230 (9.06")
B	100 (3.94")	155 (6.10")	155 (6.10")	190 (7.48")	190 (7.48")
C	26 (1.02")	45 (1.77")	68 (2.68")	88 (3.52")	120 (4.72")
D	4 (0.16")	5 (0.20")	5 (0.20")	6 (0.24")	6 (0.24")
E	105 (4.13")	128 (5.04")	142 (5.60")	150 (5.91")	160 (6.30")
F	45 (1.77")	65 (2.56")	105 (4.13")	105 (4.13")	140 (5.51")
G	68 (2.68")	94 (3.70")	136 (5.35")	136 (5.35")	168 (6.61")
H	138 (5.43")	192 (7.56")	211 (8.31")	232 (9.13")	275 (10.83")
I (P.C.D)	115 (4.53")	172 (6.77")	172 (6.77")	210 (8.27")	210 (8.27")
J	3H-M8xP1.25	3H-M10 x P1.5	3H-M10xP1.5	3H-M12xP1.75	3H-M12xP1.75
Collet/Jaw	C-25 Jaw	C-40 Jaw	C-70 Jaw	C-90 Jaw	C-120 Jaw
Air/Hydro	Hydraulic	Hydraulic	Hydraulic	Hydraulic	Hydraulic
Operating Pressure	10-25kg/cm ² (143-357psi)	10-20kg/cm ² (143-286psi)	10-20kg/cm ² (143-286psi)	10-15kg/cm ² (143-214psi)	10-15kg/cm ² (143-214psi)
Max. RPM	1800	1600	1400	1100	900
Capacity	25mm/32mm (0.98"/1.26")	45mm/50mm (1.77"/1.97")	68mm/90mm (2.68"/3.54")	88mm/88mm (3.52"/3.52")	118mm/118mm (4.65"/4.65")
Piston Area	56cm ² (8.68in ²)	90cm ² (13.9in ²)	116cm ² (18.0in ²)	132cm ² (20.5in ²)	183cm ² (28.4in ²)
Clamp Force	2508kgf@16kg/cm ² (5519lbf@228psi)	4032kgf@16kg/cm ² (8870lbf@228psi)	5197kgf@16kg/cm ² (11433lbf@228psi)	5913kgf@16kg/cm ² (13009lbf@228psi)	6148kgf@12kg/cm ² (13528lbf@171psi)
Weight	6.0kgs (13.2lbs)	13.0kgs (28.6lbs)	18.0kgs (39.6lbs)	24.0kgs (52.8lbs)	30.0kgs (66.0lbs)



Jaw Pad for Rotary Power Chuck / Stationary Chuck



Model	A	B	C	D	Screw	Suitable Chuck Model
C-25	45mm (1.77")	47.5mm (1.87")	7mm (0.28")	5.0mm (0.20")	M5x3	JA5-25 / JH5-25
C-40	65mm (2.56")	67.5mm (2.66")	9mm (0.35")	6.0mm (0.24")	M6x3	JA7-40 / JH7-40 JAS-40 / JHS-40 / CAF-40
C-70	105mm (4.13")	107.5mm (4.23")	9mm (0.35")	6.0mm (0.24")	M6x3	JA7-70 / JH7-70 / JH9-90 JHS-70 / CAF-70
C-120	140mm (5.51")	143.5mm (5.65")	9mm (0.35")	6.0mm (0.24")	M6x4	JH9-120

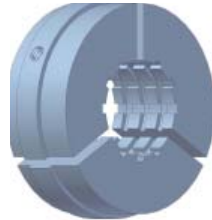
Harden Jaw Pad in Varies Shape



Through Hole



Double Layer



Serrated Groove

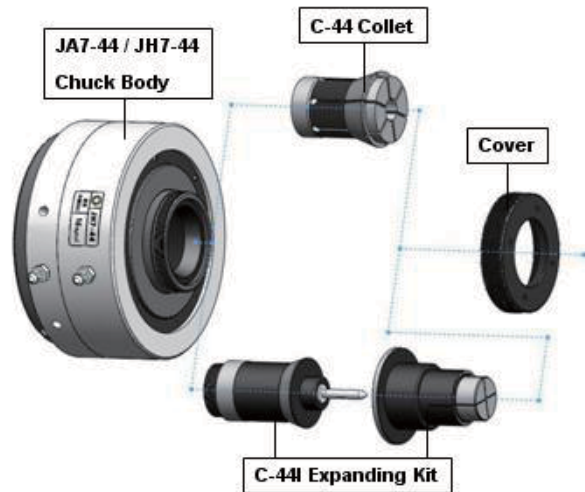


Hexagon



Extra Long

JA7-44/JH7-44 for O.D. Chucking / I.D. Expanding



Besides O.D. chucking, you can easily convert a JA7-44/JH7-44 rotary power chuck into a I.D. expanding chuck by installing an expanding kit including a push-nut, a mandrel, and a expanding sleeve. The expanding sleeve is designed and made according to your requirement.