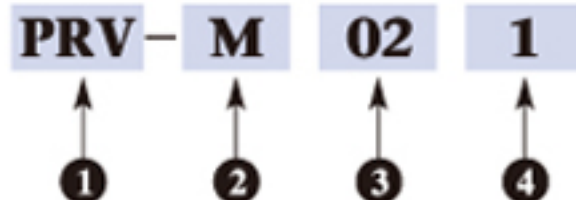
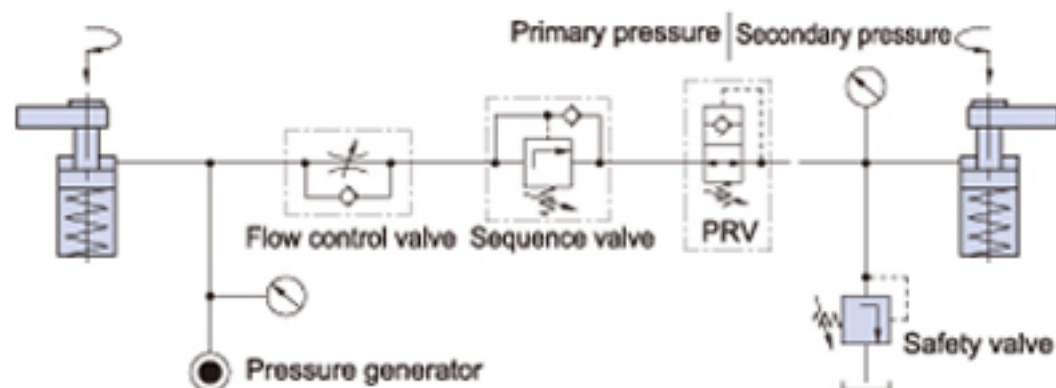


Operating pressure	500kg/cm <sup>2</sup>
Threshold pressure	5-380kg/cm <sup>2</sup>

### Ordering Code



### Circuit diagram



<b>1</b>	Series	PRV	
<b>2</b>	Blank	Line type	
	M	Manifold	
<b>3</b>	Model	02	
<b>4</b>	Threshold Pressure (kg/cm <sup>2</sup> )	1	5-30
		2	10-50
		3	20-120
		4	30-240
		5	50-380