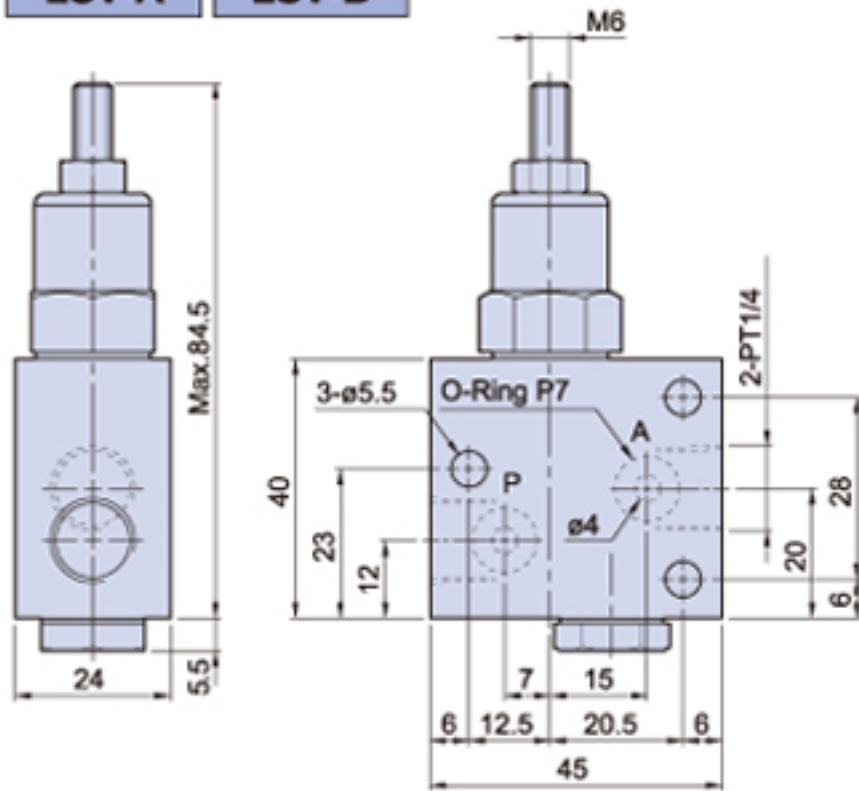
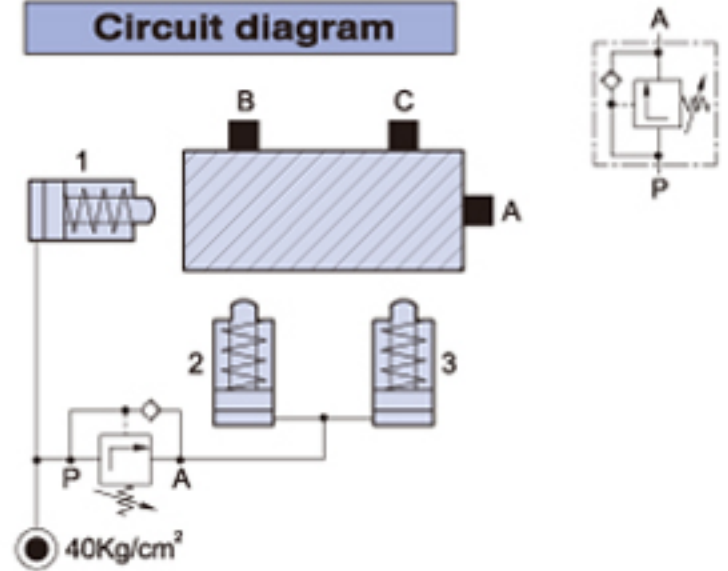


LSV-A

LSV-B

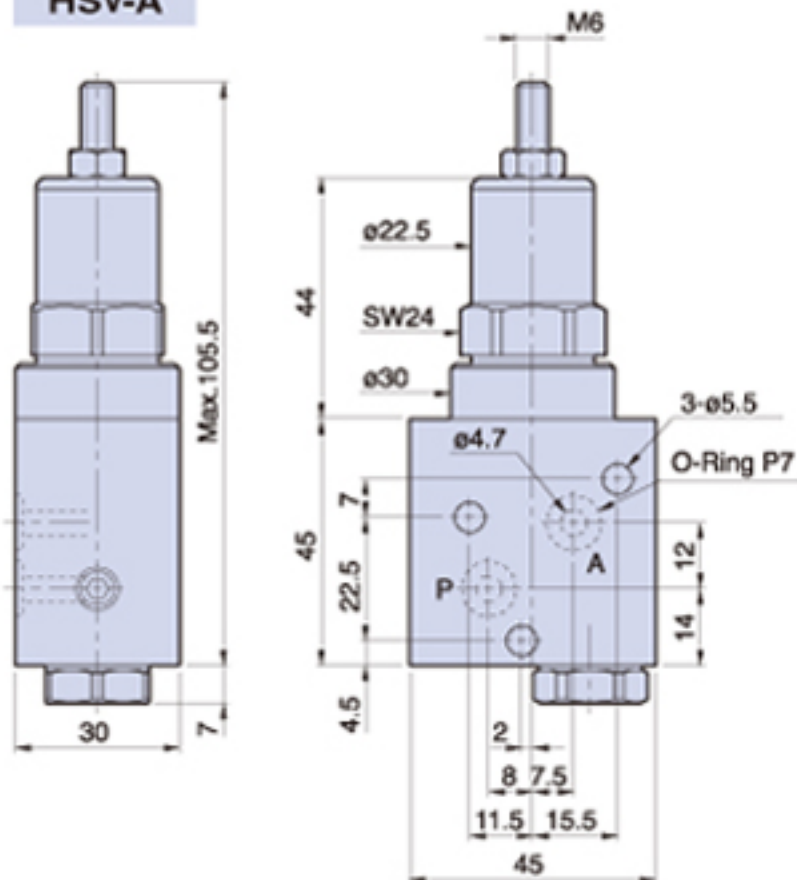


Circuit diagram

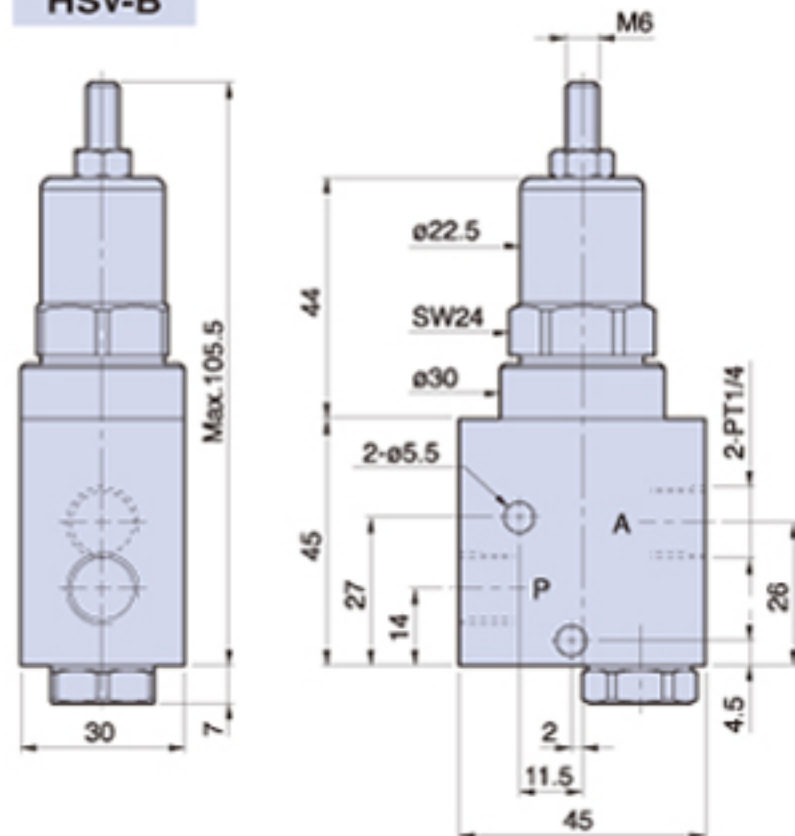


The hydraulic cylinder 1 pushes workpiece to A. The pressure reaches to the setting value 40kg/cm² on SV.
The hydraulic cylinders 2 and 3 push workpiece to B and C to provide sequential clamping motion.

HSV-A



HSV-B



Type and Pressure Range

Manifold type	Line type	Pressure Range
HSV-A1	HSV-B1	10-70kg/cm ²
HSV-A2	HSV-B2	50-300kg/cm ²

Manifold type	Line type	Pressure Range
LSV-A	LSV-B	10-70kg/cm ²